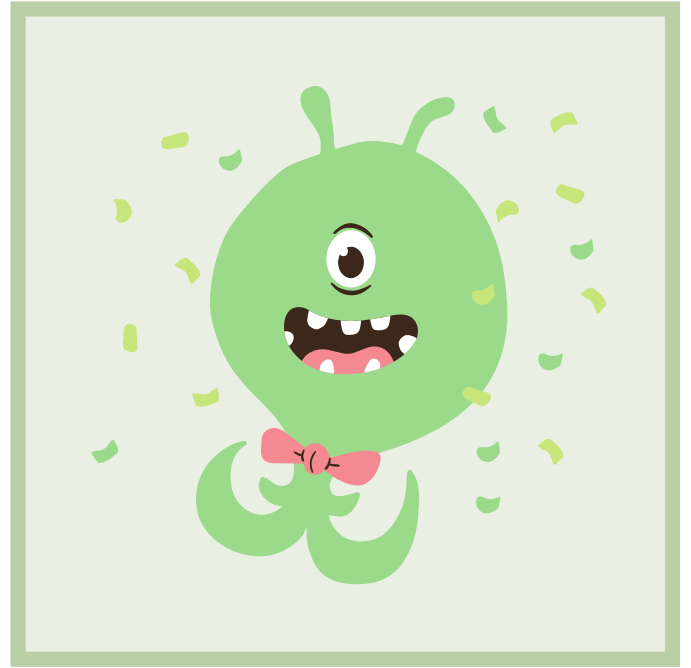
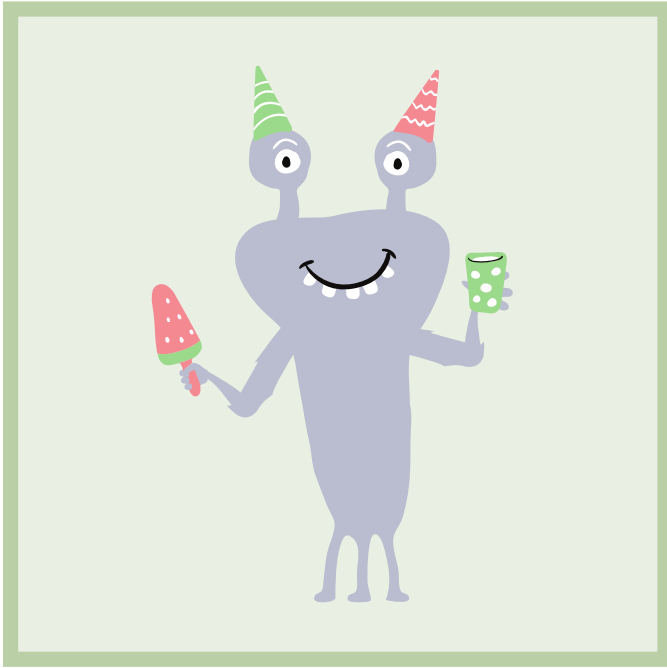


COMPARE AND CONTRAST

THE MONSTER ON THE LEFT IS THINNER THAN THE MONSTER ON THE RIGHT



THE MONSTER ON THE LEFT DOES NOT HAVE AS MANY SPOTS AS THE MONSTER ON THE RIGHT.



COMPARE AND CONTRAST

- but
- however
- yet
- unlike
- although
- share
- both
- like



Use **Compare & Contrast** language to:
Discuss similarities and differences

Choose the best options

Identify common characteristics

- by comparison
- on the other hand
- as opposed to
- share the same
- just like



- whereas
- however
- conversely
- in common

The similarities between ___ and ___ indicate.

One similarity is _____.

One difference is _____.

By comparing ___ to ___, we learn_____.

